

State of Wyoming Corner Record

(in compliance with the CORNER PERPETUATION AND FILING ACT, Wyoming Statutes, 1997, Section 33-29-140, et. seq. and the Rules and Regulations of the Board of Registration for Professional Engineers and Professional Land Surveyors)

Reverse side of this form may be used if more space is needed.

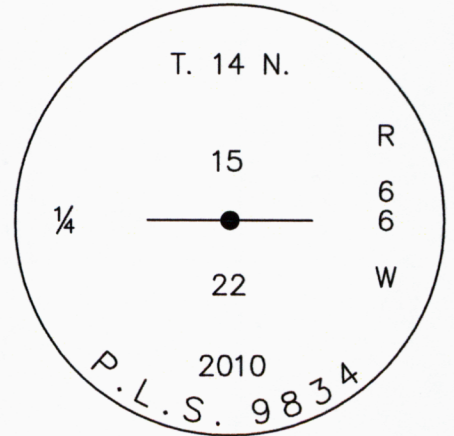
Record of original survey and citation of source of historical information (if corner is lost or obliterated). Description of corner monumentation evidence found and/or monument and accessories established to perpetuate the location of this corner. Sketch of relative location of monument, accessories, and reference points with course and distance to adjacent corner(s) (if determined in this survey). Method and rationale for reestablishment of lost or obliterated corner.

FOUND: NOTHING FALLS IN THE ASPHALT ON THE EASTERLY SIDE OF COLLEGE DRIVE AT THE INTERSECTION OF SUMMIT DRIVE.

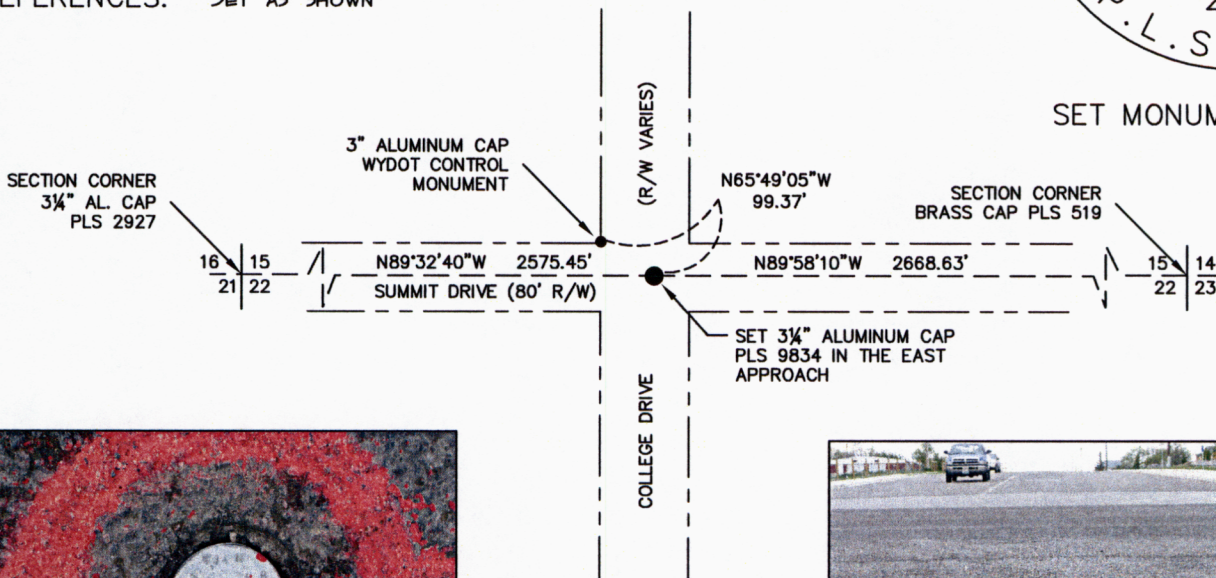
G.L.O. RECORD: UNKNOWN

SET: 3/4" ALUMINUM CAP ON A #5 x 24" REBAR DRIVEN 0.1' BELOW THE ASPHALT SURFACE. CAP FALLS IN THE EAST APPROACH OF SUMMIT DRIVE. CORNER WAS REESTABLISHED FROM RECORD DATA FROM THE ORIGINAL PLAT OF CRESTMOOR WHEN THE CORNER WAS LAST RECORDED. STAMPED AND REFERENCED AS SHOWN.

REFERENCES: SET AS SHOWN



SET MONUMENT DETAIL



Monument Set



Looking West down Summit Dr.

Date of Field Work: 6-2010

Office Reference: STOREY BLVD EXTENTION

CROSS INDEX DIAGRAM

A	2	3	4	5	6	7	8	9	10	11	12	13	14	15	16	17	18	19	20	21	22	23	24	25
B																								
C	6		5		4		3		2		1													
D																								
E																								
F																								
G	7		8		9		10		11		12													
H																								
J																								
K																								
L	18		17		16		15		14		13													
M																								
N																								
O																								
P	19		20		21		22		23		24													
Q																								
R																								
S																								
T	30		29		28		27		26		25													
U																								
V																								
W																								
X	31		32		33		34		35		36													
Y																								
Z																								

Firm/Agency, Address

Cotton D. Jones, P.L.S.  
 Jones Land Surveying, Inc.  
 6750 Say Kally Rd.  
 Cheyenne, WY 82009  
 Telephone Number: (307) 637-7107

This corner record was prepared by myself or under my direct supervision.

SEAL & SIGNATURE



RECORDED 6/08/2010 AT 8:18 AM REC# 546331 K# 2168 PG# 357  
 DEBRA K. LATHROP, CLERK OF LARAMIE COUNTY, WY PAGE 1 OF 1

Corner Name: 1/4 CORNER

Section: 15/22 T 14 R 66 ; 6th P.M. Cross-Index No.: N-15